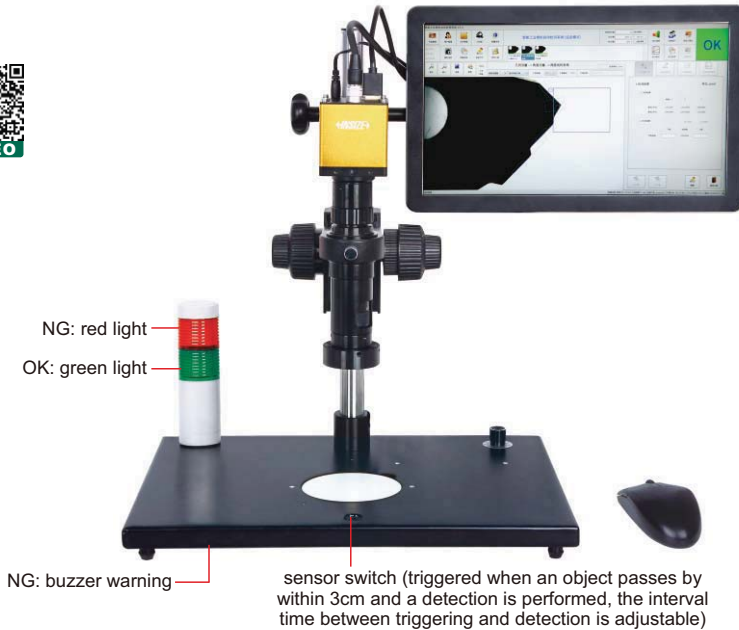


**AUTOMATICALLY LOCATE WORKPIECES  
REGARDLESS OF POSITION AND DIRECTION**

**BUILT-IN SOFTWARE  
WITHOUT COMPUTER**

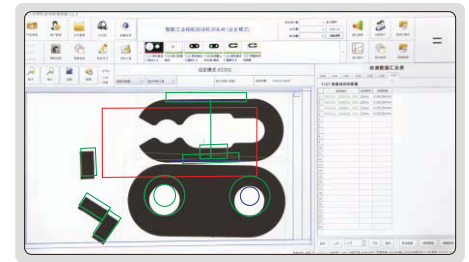
# SMART MICROSCOPE (WITH DISPLAY) CODE ISM-DL400



### camera function

- surface defect detection
- dimension measurement
- read barcode
- burr detection
- contour matching
- character recognition
- color detection
- read QR code
- object counting
- thread measurement

### detect different workpieces at one time



- Automatically identify different workpieces
- Automatically locate workpieces regardless of position and direction
- Built-in software, PLC control input and output interface
- Including multiple detection tools
- Automatically calculate, store the test results and sent to Excel

Test ID	Test Name	Inspection Times	OK Count	NG Count	Inspection Rate	Defective Rate
1	T102	480	200	280	41.67%	58.33%
2	T102	480	200	280	41.67%	58.33%
Summary		480	200	280	41.67%	58.33%

report showing the perform times of each tool, quantity of OK and NG, the report can be saved

Inspection data summary table					
T102 Cluster					
Detection number	Detection time	Detection color	Number of spots	Maximum width	Maximum height
1	700101_000641_001	白色	0	0.0000mm	0.0000mm
2	700101_001151_001	白色	0	0.0000mm	0.0000mm
3	700101_001192_001	白色	0	0.0000mm	0.0000mm
4					
5					
6					
7					
8					
9					
10					
11					
12					
13					
14					

report of each detection is automatically created and saved

### SPECIFICATION

<b>Magnification</b>	15X~100X
<b>Resolution</b>	1920×1080
<b>Pixel</b>	2M
<b>Single pixel size</b>	3.75×3.75μm
<b>Frame rate</b>	60fps
<b>Sensor</b>	1/2" CMOS
<b>Chip structure</b>	FPGA+ARM
<b>Operation system</b>	Linux 3.10
<b>Power supply</b>	power adapter
<b>Dimension (L×W×H)</b>	570×300×430mm
<b>Weight</b>	6.5kg

### STANDARD DELIVERY

<b>Main unit</b>	1 pc
<b>0.5X camera adapter</b>	1 pc
<b>1X auxiliary objective</b>	1 pc
<b>Calibration plate</b>	1 pc
<b>16G USB flash disk</b>	1 pc
<b>White/black plate</b>	1 pc
<b>HDMI cable</b>	1 pc
<b>Power adapter</b>	3 pcs

### MAGNIFICATION, FOCUS DISTANCE AND VIEW FIELD

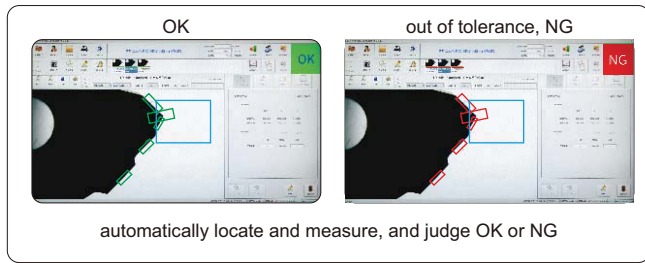
Auxiliary objective	Specification	Camera adapter	
		0.5X (included)	1X (optional)
1X (included)	magnification	15~100X	30~200X
	focus distance	70±2mm	70±2mm
	view filed	16×11~2.5×1.6mm	7.8×5.3~1.2×0.8mm
2X (optional)	magnification	30~200X	60~400X
	focus distance	29±2mm	29±2mm
	view filed	7.8×5.3~1.2×0.8mm	3.8×2.7~0.6×0.4mm

### OPTIONAL ACCESSORY

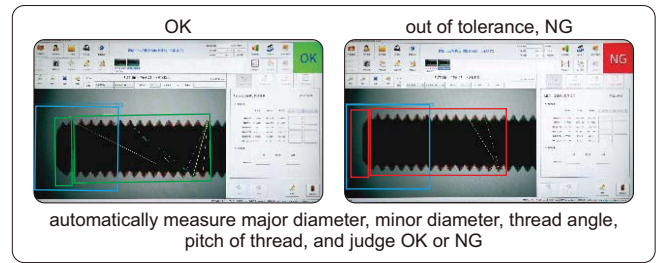
<b>1X camera adapter</b>	<b>ISM-DL-CA1X</b>
<b>2X auxiliary objective</b>	<b>ISM-DL-OB2X</b>
<b>LED light</b>	
<b>Auxiliary objective</b>	

APPLICATION EXAMPLES:

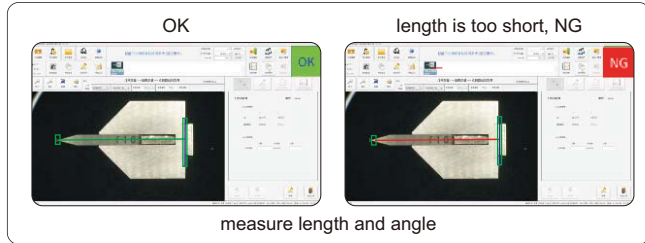
dimension measurement



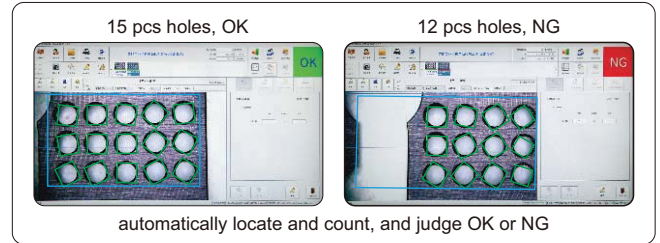
thread measurement



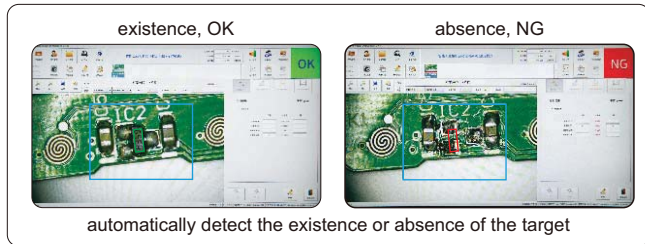
cutting tools measurement



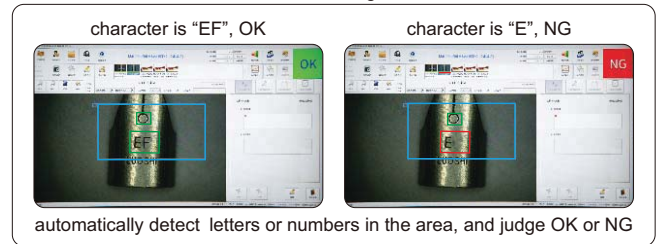
counting



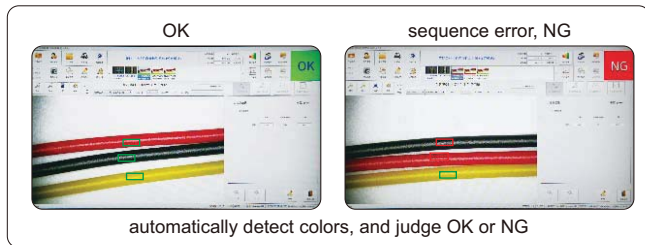
existence or absence



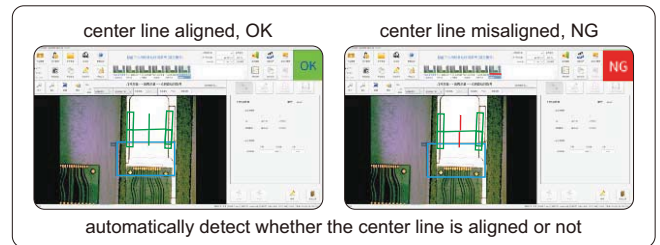
character recognition



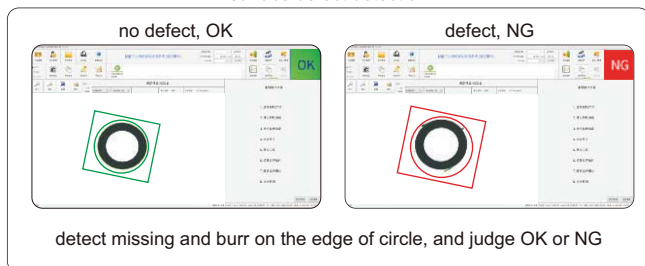
color detection



location detection



surface defect detection



glue detection

